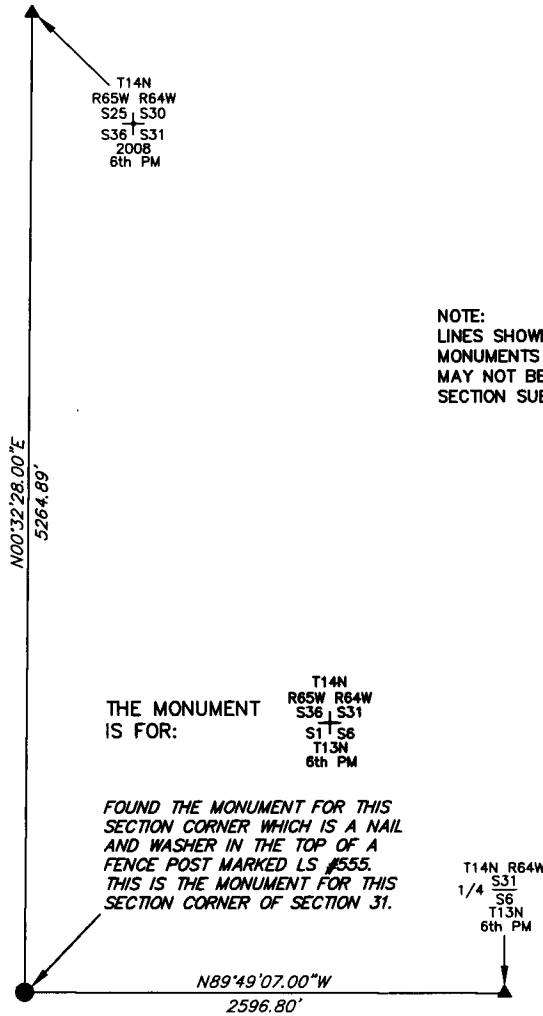


State of Wyoming Corner Record

CORNER PERPETUATION AND FILING ACT,
Regulations of the Board of Registration for Professional Engineers and Land Surveyors.)

Reverse side of this form may be used if more space is needed.

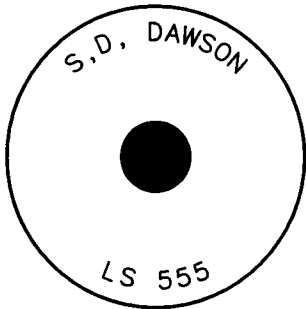
Record of original survey and citation of source of historic information (if corner is lost or obliterated). Description of corner monumentation evidence found and/or monument and accessories established to perpetuate the location of this corner. Sketch of relative location of monument, accessories, and reference points with course and distance to adjacent corner(s) (if determined in this survey). Method and rationale for reestablishment of lost or obliterated corner.



NOTE:
LINES SHOWN ARE BETWEEN
MONUMENTS AND MAY OR
MAY NOT BE SECTION OR
SECTION SUBDIVISION LINES.

THE MONUMENT
IS FOR:

FOUND THE MONUMENT FOR THIS
SECTION CORNER WHICH IS A
NAIL AND WASHER IN THE TOP OF A
FENCE POST MARKED LS #555.
THIS IS THE MONUMENT FOR THIS
SECTION CORNER OF SECTION 31.



THE MONUMENT IS MARKED

CORNER MONUMENT SYMBOLS

- RECORD IS FOR THIS CORNER MONUMENT.
- ▲ A RELATED CORNER OR WC MONUMENT.

SCALE 1"=1000'
(EXCEPT IN
TRIVIAL CASES)
BEARINGS ARE RELATED
TO WGS 84 WITH
GPS OBSERVATIONS
DRAWN BY: SM
P.C. D. SHANKS
COUNTY: LARAMIE



RECP #: 658198

RECORDED 4/6/2015 AT 2:29 PM BK# 2437 PG# 917
Debra K. Lathrop. CLERK OF LARAMIE COUNTY. WY PAGE 1 OF 1

Date of Field Work: 12/27/2013 Office Reference: _____

CROSS INDEX DIAGRAM

A	1	2	3	4	5	6	7	8	9	10	11	12	13	14	15	16	17	18	19	20	21	22	23	24	25	A
B																										B
C		6			5				4					3					2							C
D																										D
E																										E
F																										F
G		7			8				9					10					11							G
H																										H
J																										J
K																										K
L		18			17				16					15					14							L
M																										M
N																										N
O																										O
P		19			20				21					22					23							P
Q																										Q
R																										R
S																										S
T		30			29				28					27					26							T
U																										U
V																										V
W																										W
X		31			32				33					34					35							X
Y																										Y
Z																										Z
	1	2	3	4	5	6	7	8	9	10	11	12	13	14	15	16	17	18	19	20	21	22	23	24	25	

Firm/Agency, Address

UELS, LLC

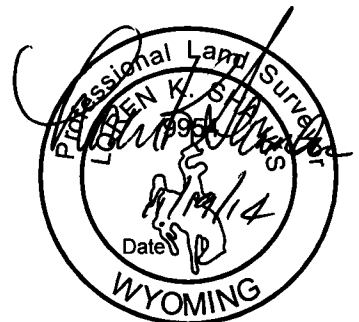
85 South 200 East

Vernal, Utah 84078

Telephone Number: 435-789-1017

This corner record was prepared
by me or under my direction
and supervision.

SEAL & SIGNATURE



CORNER COMMON TO 4 SECTIONS
Corner Name: SOUTHEAST CORNER OF SECTION 36 Section: 36 T. 14N R. 65W ; 6TH P.M. Cross Index No.: Z-25
SBRPEPLS/PLSW: March 1994 (CLCR...SJA)